

The Demographic and Economic Contributions of New Americans to Chittenden County



Between 2009 and 2015, the foreign born population rapidly increased, rising to

12,498¹



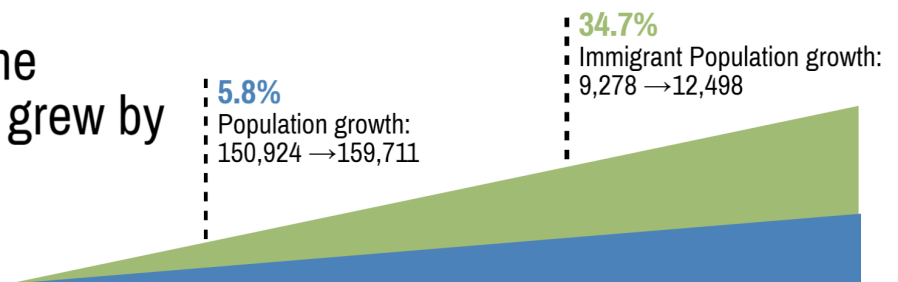
That's around

7.8%

of Chittenden's population.

Over the last 6 years, the foreign born population grew by

3,320



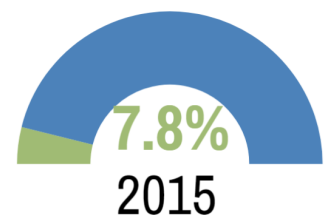
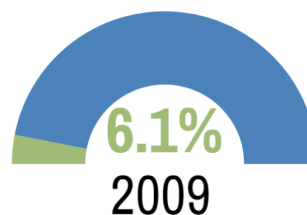
In the last decade, more than

one in three

people moving to the county have been foreign-born



Which means that the share of the population that is foreign-born in the county rose substantially



The Demographic and Economic Contributions of New Americans to Chittenden County

In 2015, foreign-born residents of Chittenden County contributed more than

\$90.3M

to federal, state, and local taxes

\$27.2M² — State and local tax contributions

\$16.1M⁴ — Social Security contributions

\$43.3M³ — Federal tax contributions

\$3.8M — Medicare contributions

This left foreign-born residents with over \$168M to spend in local communities



Which accounted for more than

6.1%

of the total spending power in the county

Since the Great Recession, new immigrants have added



to the value of the county's housing stock



As a result of the New American population, over

3,374⁶

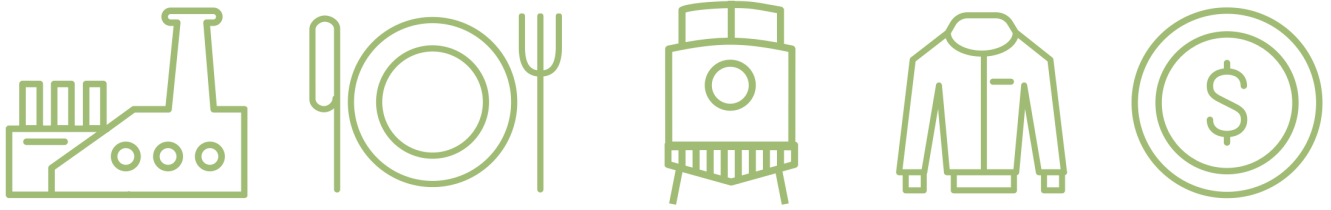
US born residents have moved to Chittenden County



CHAMPLAIN VALLEY OFFICE OF ECONOMIC OPPORTUNITY

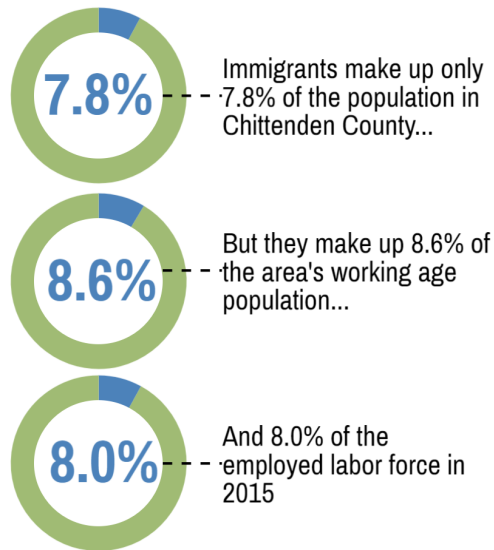
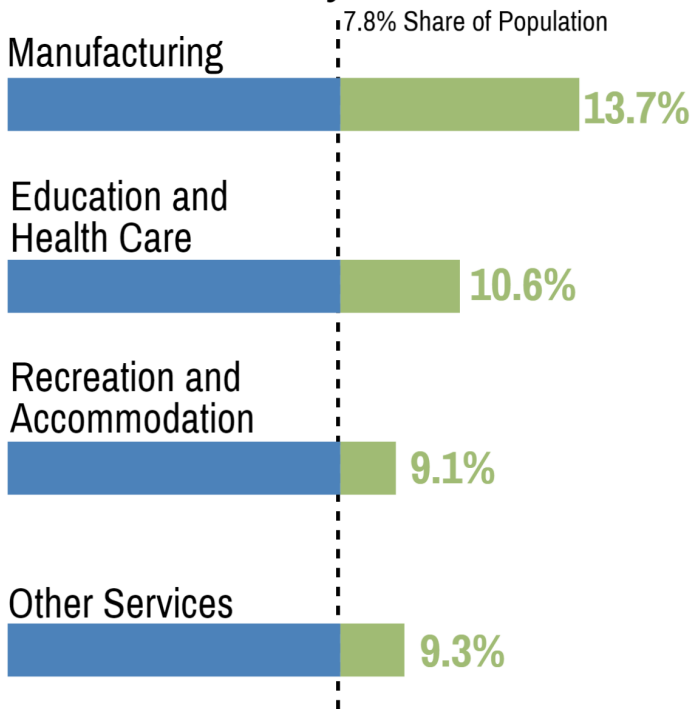
Bridging gaps, building futures.

The Demographic and Economic Contributions of New Americans to Chittenden County



Each year, New Americans contribute more than **\$712M⁷** to the GDP of Chittenden County.

In fact, immigrants are over-represented in key industries within the county



282 immigrants in Chittenden County are self employed at businesses they own.

Because of the vital role that immigrants play in the Chittenden economy, it can be estimated that New Americans helped create or preserve

272⁸ local manufacturing jobs that would have vanished or moved elsewhere

Endnotes

1. Unless otherwise specified, data comes from a 5-year-samples of the American Community Survey from 2009 and 2015, and figures refer to Chittenden County.
2. Institute on Taxation and Economic Policy. 2015. "Who Pays? A Distributional Analysis of Tax Systems in All Fifty States."
3. U.S. Congressional Budget Office. 2017. "The Distribution of Household Income and Federal Taxes, 2015."
4. U.S. Internal Revenue Service. 2017. "Publication 15, (Circular E), Employer's Tax Guide."
5. Vigdor, Jacob. 2013. "Immigration and the Revival of American Cities: From Preserving Manufacturing Jobs to Strengthening the Housing Market."
6. Vigdor, Jacob. 2013. "Immigration and the Revival of American Cities: From Preserving Manufacturing Jobs to Strengthening the Housing Market."
7. This figure derives from calculations based on the foreign-born residents share of wage income and self-employment income from the 5-year ACS sample from 2014 and the statistics of GDP from the NACo County Explorer, maintained by the National Association of Counties.
8. Vigdor, Jacob. 2013. "Immigration and the Revival of American Cities: From Preserving Manufacturing Jobs to Strengthening the Housing Market."

This report was produced by Alexander Duchac for the Champlain Valley Office of Economic Opportunity. If you have any questions or concerns please contact him at aduchac@vassar.edu.
